



ANNUAL REPORT 2021

Mouvement Social

Badaro (Head office)

Badaro, main road, Mouvement Social bldg.

Tel: +961 1 381 879 - +961 1 390 335

E-mail: msl@mouvementsocial.org



TABLE OF CONTENTS

Mouvement Social Overview.....	3
• Our vision.....	5
• Our mission.....	5
• Acknowledgments.....	6
• Organizational overview	6
• Message from the executive director	3
Volunteerism Unit	8
• What we do	8
• Beneficiaries and locations	8
• The projects helped in.....	9
Protection Unit.....	10
• What we do.....	10
• Child Protection Program.....	10
• Beneficiaries and locations	11
• Finalizing SOPs/guidance on the 2 non-custodial measures	12
• Access to justice program	10
Livelihood Unit	15
• What we do	12
• Beneficiaries and locations	12
Education Unit.....	15
• What we do	15
• Beneficiaries and locations	15
• Jnah Kindergarten- A story of education, care and compassion	20
• Life Testimonial from Rabha Al Abdullah on Jnah Kindergarten	21
Emergency Response	22
• What we did	22



MESSAGE FROM THE EXECUTIVE DIRECTOR

In 2020, the world watched as Lebanon reeled from compounding crises: vaulting inflation, civil unrest that overflowed from the prior year, an unruly spread of COVID-19, and a deadly port explosion that devastated the country's capital. But what occurred in 2021 was a return to crises at the institutional level—a rot from the top down.

Economic instability continues to have serious implications for the livelihoods of everyday people. Nearly three quarters of Lebanese live below the poverty line, and fuel shortages have triggered rolling blackouts throughout the year. It was only natural that these crises affected the most marginalized and vulnerable population. Against the backdrop of these compounded crises, Mouvement Social's team had to stand by the marginalized population, from all nationalities; we made sure to provide whatever assistance we could to meet their needs, and succeeded in reaching 20,524 direct beneficiaries.

In view of our commitment to stand by the individuals who turn to us for help, we at Mouvement Social had to reorient our priorities in an attempt to meet as much as possible of the basic needs of our target groups and facilitate their access to Education and to Protection services but also to Socio-Economic empowerment.

Tamam Mroue
Executive Director

MOUVEMENT SOCIAL OVERVIEW



Mouvement Social is a pioneering non-governmental organization which has been supporting, engaging communities since the 50's in an attempt to live a better reality. Prior and during the war, MS was clearly positioned as the secular, non-partisan and value driven organization that was providing vulnerable communities with support on multiple levels through engaging local resources (volunteers) and mobilizing local funding (philanthropists, ministries) and creating income-generating projects. With more than 13 centers covering the whole country, MS was able to set the ground for civic activism in a period where post-independence Lebanon had suffered from many economic and social problems.

The role that Movement Social played in transforming "charity" into an informed, grassroots and sustainable development work have contributed to creating a collective awareness of citizens of their rights, duty of government and their instrumental role in pushing towards a better and more equitable society.

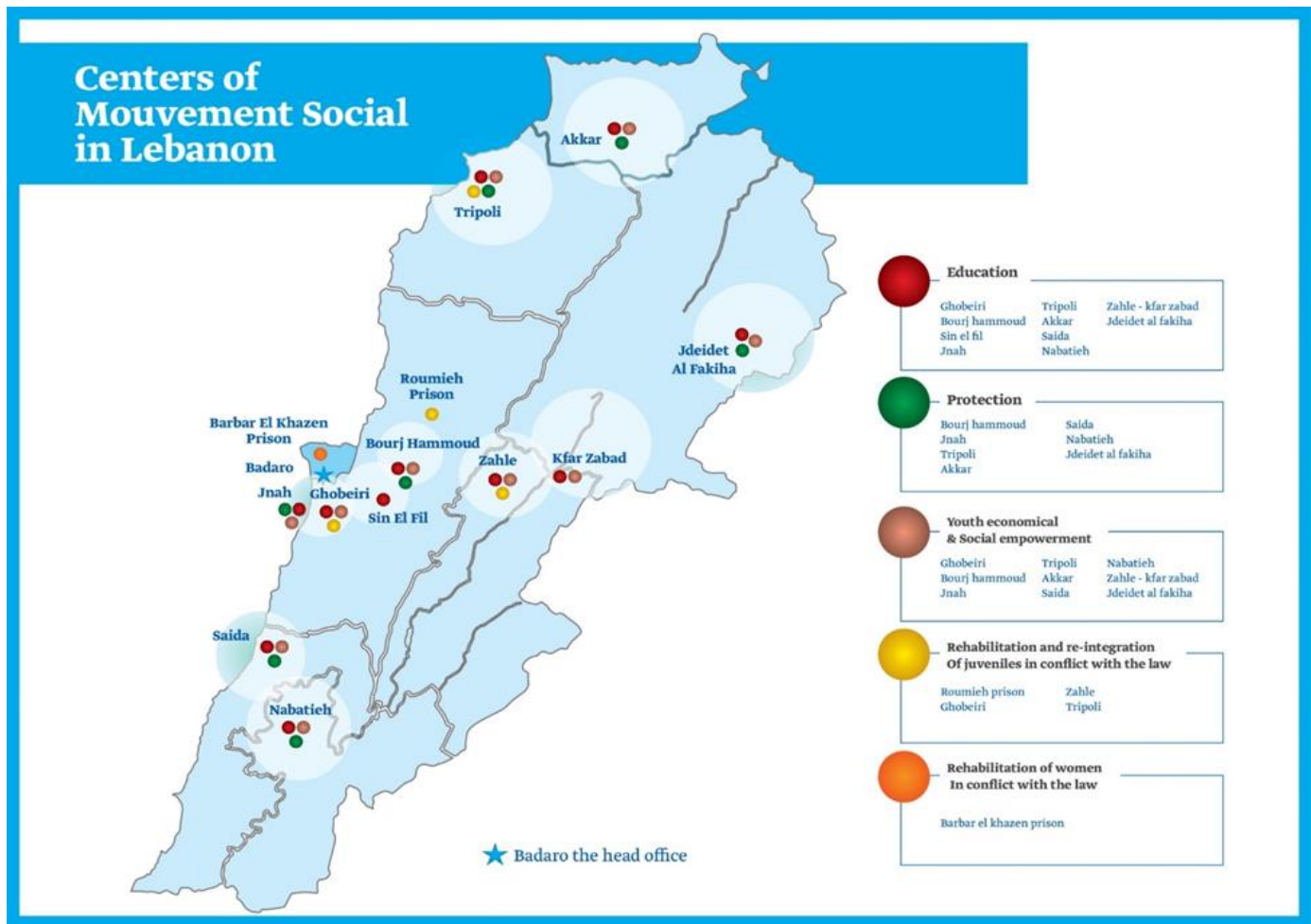


Figure 1: the geographical distribution of MS activities in each centers over the Lebanese territories.

OUR VISION

To enable all Human beings and the humankind, in Lebanon, to play an active role in transforming their realities through social solidarity and collaboration to achieve social and environmental justice.

Mouvement Social works to build social support networks as well as empower individuals to engage in the wider community. MS does not simply intervene on behalf of its beneficiaries to improve their access to their rights; it mainly works to increase societal awareness of social issues and lobbies decision-makers (lawmakers) to promote policies that take into consideration the basic rights and needs of the underprivileged.

OUR MISSION

Mouvement Social has been working since 1961 towards sustainable development over all the Lebanese soil in a secular fashion. It aims to build a fair and humane society, to improve the citizenship and autonomy of the underprivileged through socio-economic development projects and to implicate Lebanese youth in the development and improvement of their society.

ACKNOWLEDGEMENTS

Mouvement Social's journey has witnessed successes throughout the years. All this was made possible due to the generous support of donors, partners and every individual who contributed to achieving the organization's goals. Our funders in 2021 are: UNICEF, UNDP, UNODC, Save The Children, Partage, Ministry of Health, ILO, French Institute, Fondation de France, Christian Aid, Expertise France and ARCS.

All of them are the essential cornerstone of Mouvement Social's success and the reason for its wider outreach.

ORGANIZATIONAL OVERVIEW

Mouvement Social is divided into four units: **The Volunteerism Unit, the Education Unit, the Protection Unit and the Livelihoods Unit**. Each unit operates with activities coordinated and supervised by Mouvement Social's Executive Director and Board Members.

Every unit has a specific focus area, yet they all work towards the same goal: to build a fair and humane society, to improve the citizenship and autonomy of the underprivileged through socio-economic development projects and to implicate Lebanese youths in the development and improvement of their society.

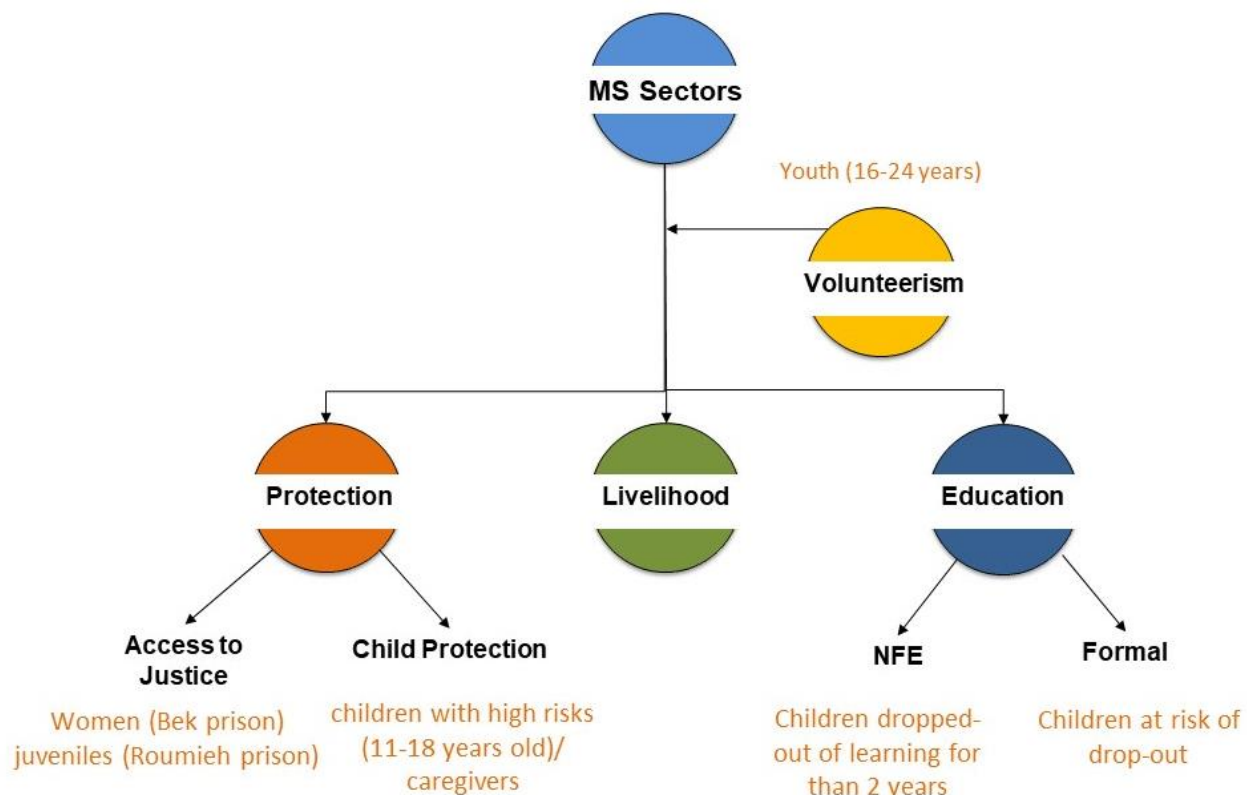


Figure 2: MS Sectors

In each Unit the following numbers were reached during 2021 (Figure 3), in addition to an emergency response project developed due to the current crisis.

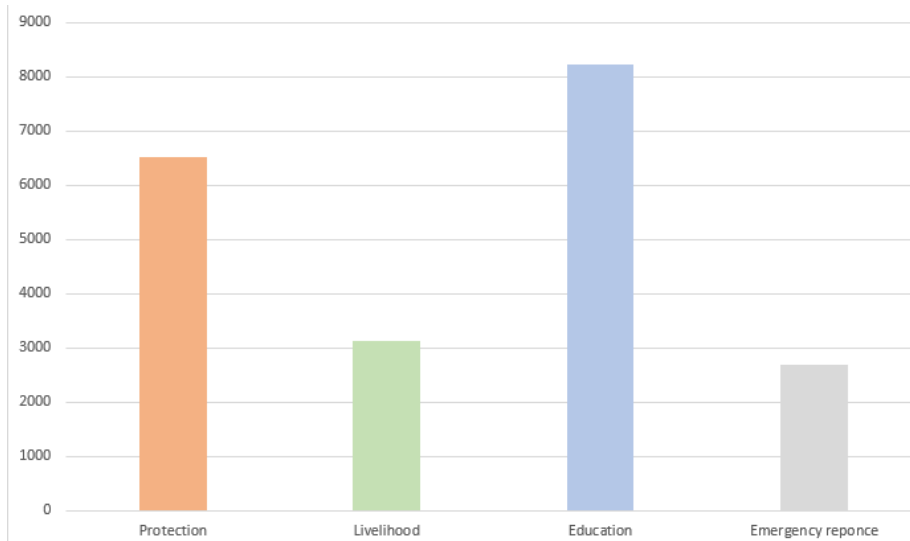


Figure3: Total number of beneficiaries reached in 2021 per sector.

In order to align the strategic objectives of Mouvement Social with the existential radical changes in the Lebanese context, Mouvement Social worked with experts and updated its related policies and procedures to the **HR management tools and documents, the Communication strategy, the Monitoring and Evaluation Guidelines, the Risk Management and Contingency Planning and the Data and assets management.**

Furthermore, Mouvement Social enhanced the capacity-building of the staff, and initiated a new department to ensure the continuous learning and improvement of the organization's staff to be properly equipped to serve the community and people in Lebanon.

For that, during 2021, **162 employees at Mouvement Social have been trained** in order to enhance their capacity and refine their skills for better work performance and for development on the personal and professional levels of each employee.

Mouvement Social selected a focal point that will ensure the implementation and the safeguarding of the adopted policies.

VOLUNTEERISM UNIT



What we do

MS was launched on the basis of “Volunteerism” in 1958 and the program was relaunched in 2019 to empower youth, the actors for change, to become active citizens in their communities & contribute to the prevention and mitigation of crises.

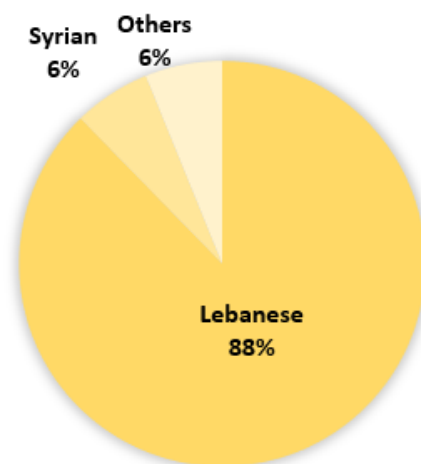


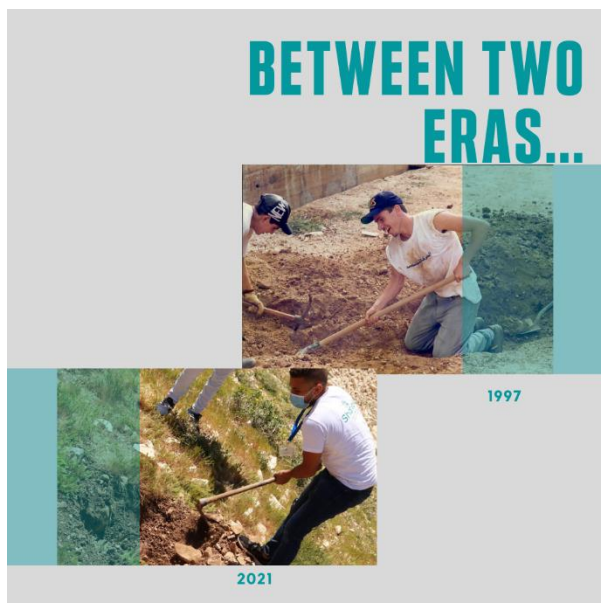
Figure 4: total number of direct beneficiaries reached under the Volunteerism in 2021 distributed as per nationality

Beneficiaries and locations

In 2021, MS mobilized and capacitated 114 volunteers to be engaged in different individual and collective initiatives. This program was implemented in partnership with different partners through two main projects; Shabake project_ Strengthening resilience of Lebanese civil society in order to improve crisis prevention and management_ and SAFIR project.

The projects helped in

- Expanding the floor of collaboration between the different youth from different geographical areas and different nationalities, which led to tangible outcomes that benefited their communities.
- Investing in youth's capacity, aspirations, energy, and creativity to make them better equipped to cope and recover.
- Equipping MS' new generation staff with the needed skills, knowledge, attitude and approaches (infrastructure) to collaborate effectively with volunteers and providing them with the needed guidance and support to reach their goals.
- Enabling the volunteers with the knowledge and the space to actualize their learning as active citizens as the goal is to see them resilient and agents of change in the society.



PROTECTION UNIT

What we do

In 2014, MS launched its specialized Child Protection program, based on its previous experience in child protection, enabling it to amass significant hands-on expertise in this domain. Child Protection plays a major role in improving the wellbeing of vulnerable populations, children and adults among host communities and Syrian refugees, who saw their socioeconomic condition plummet over time. The overall objective of the interventions was to mitigate the destabilizing effects of the protracted crisis by responding better to the resilience needs of refugees and host communities in the targeted localities. Mouvement Social's Protection Unit focuses on two main programs: **Child Protection** and **Access to justice**.

Child Protection Program

Mouvement Social launched three projects under the umbrella of the "Child Protection" Program in 2021:

Funded by UNICEF	<ul style="list-style-type: none">• "Improving child protection response and enhancing the intervention for the most vulnerable children including those in contact with the law"
Funded by Expertise France	<ul style="list-style-type: none">• "Resilience for refugees and host communities in response to the protracted Syrian crisis"
Funded by Partage	<ul style="list-style-type: none">• "Lift Obstacles IN Kids' future - LINK"

Beneficiaries and locations

In 2021, MS recruited two advisors for PSS mental health and Case management as a measure to improve the quality of the interventions and to monitor the implementation of this program.

In 2021, 6,031 direct recipients benefited from MS child protection services including 4,276 children and 1,755 caregivers.

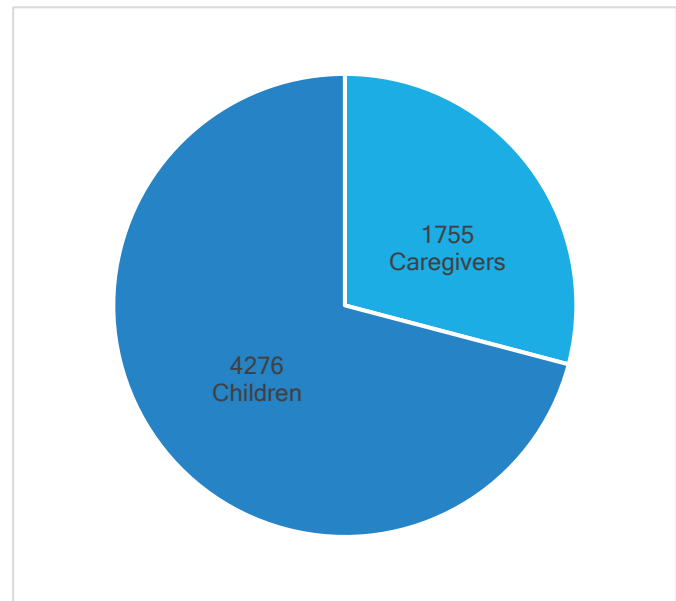


Figure 6: total number of direct beneficiaries reached under the Child Protection Program in 2021

MS implemented the Child Protection activities in the most vulnerable localities in Lebanon, demonstrating high socio-economic pressures as well as relatively high proportions of Syrian-to-Lebanese residents. The interventions were through MS community centers in Tripoli, Akkar (Halba and Hissa), Sidon, Jdeidet el Fekha, Bourj Hammoud, and Jnah. In 2021 as well, MS has initiated its child protection program in Sin El-fil but also through Social Development Centers- SDCs in Tebnine (Bent Jbeil), Marjaayoun (Marjaayoun) and Doueir (Nabatieh) where MS has no centers.

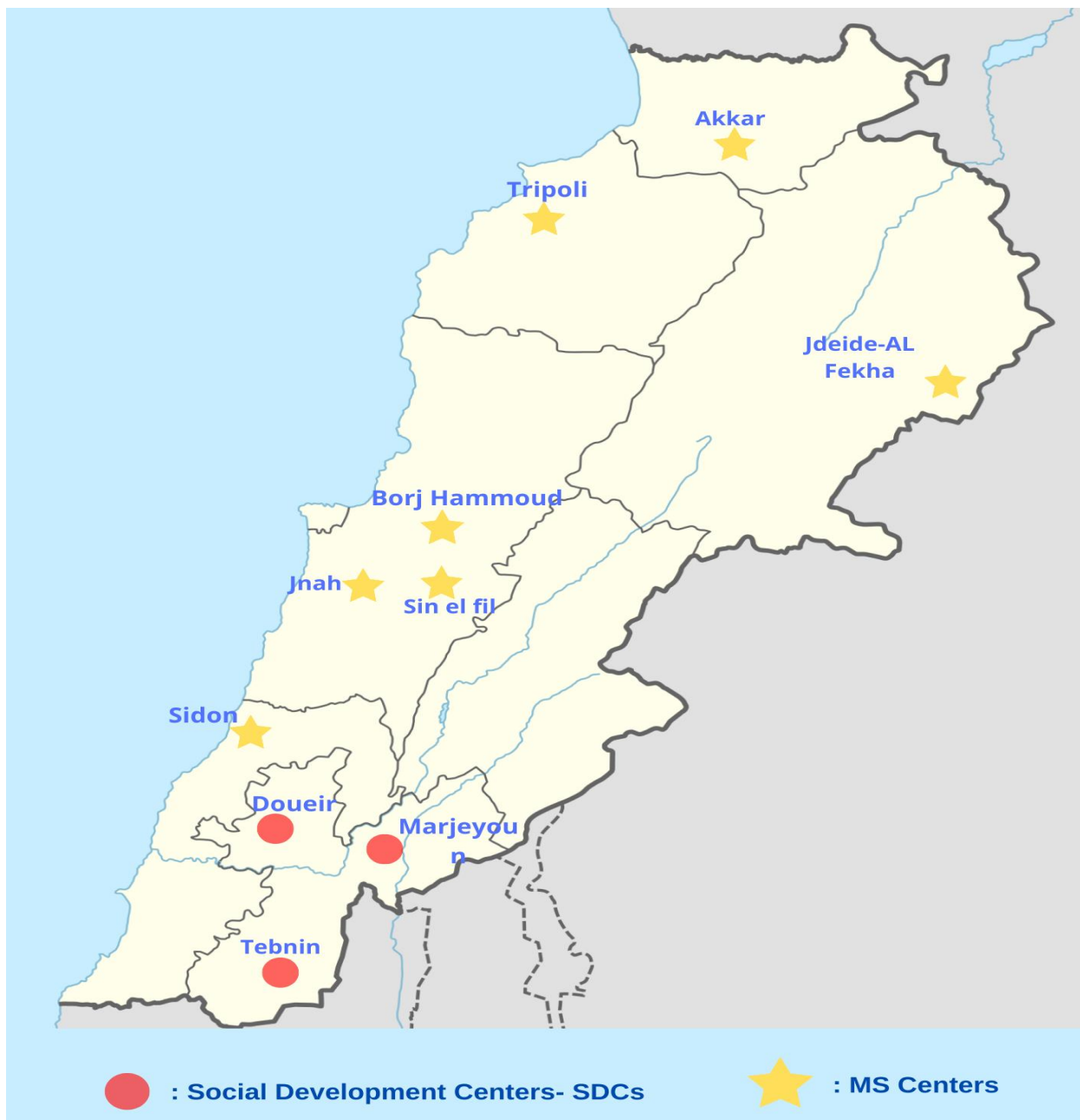


Figure 5: MS centers and SDCs localities

Finalizing SOPs/guidance on the 2 non-custodial measures

Mandated by the Ministry of Justice and in partnership with the Ministry of Social affairs and UNICEF, MS developed SOPs/guidance on the 2 non-custodial measures: **‘Community Service’** and **‘Supervised Freedom’** in 2021.

In July 2021, the guidance for two other alternative measures has been proven. These alternatives are probation and victim reparation.

The SOPs targeted the relevant stakeholders (especially the Lebanese judges) to ensure adequacy and consistency in the application and implementation of these measures.

Providing technical support towards the establishment of a “Rehabilitation Center for the children sentenced by the Juvenile Courts in Lebanon

MS worked towards the rehabilitation of children in conflict with the Law, with the sub-contracting of Nusroto, a local NGO contracted by the Ministry of Justice (MoJ) to become the rehabilitation center for the children who were sentenced by the Juvenile Courts in Lebanon. MS provided the needed technical support to Nusroto in the specific field of “the Rehabilitation of Children in Conflict with the Law” by building the capacity of the organization, through the development of relevant tools and the training/coaching of their staff.

Access to Justice Program

Having both the Ministry of Justice (MoJ) and the Ministry of Social Affairs (MoSA) as partners, Mouvement Social launched two projects under the umbrella of “Access to Justice” Program in 2021:

The “DROIT: Rights, Social Reintegration, Vocational Guidance & Protection for young adults, women and people with disabilities held in Lebanese jails” project funded by ARCS, AJEM, and MoSA, and the “Psychosocial and Juridical Support to Vulnerable Syrian and Lebanese Juveniles in Conflict with the Law” project funded by Christian Aid, MOSA and MoJ.

Beneficiaries and locations

During 2021, and despite the different restrictions and obstacles faced due to Covid-19 restrictions and constant lockout initiated by the Order of Lawyers, 478 prisoners were supported by MS, 265 children in Roumieh prison and 213 women in Barber El-Khazen prison.

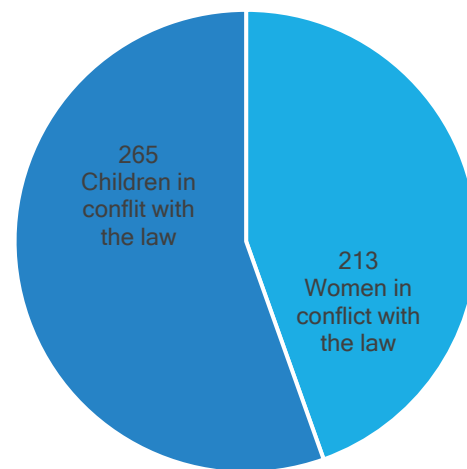


Figure 7: total number of direct beneficiaries reached under the Access to Justice program in 2021

Establishing the “Rehabilitation and Reintegration programs” as well as new partnerships

In 2020, MS established the rehabilitation and reintegration program which aims to support the prisoners not only by enabling them with craftsmanship skills but also working on ensuring their inclusion within their community after release. To that purpose, and in partnership with different actors, MS worked on improving advocacy measures and policy-making to help - by the means of policy reform - the improvement of the justice and penitentiary system, in Lebanon.

In 2021 also, MS built partnerships with governmental and non-governmental entities that hosted the children serving the Community Service measure sentenced by the Juvenile Court.

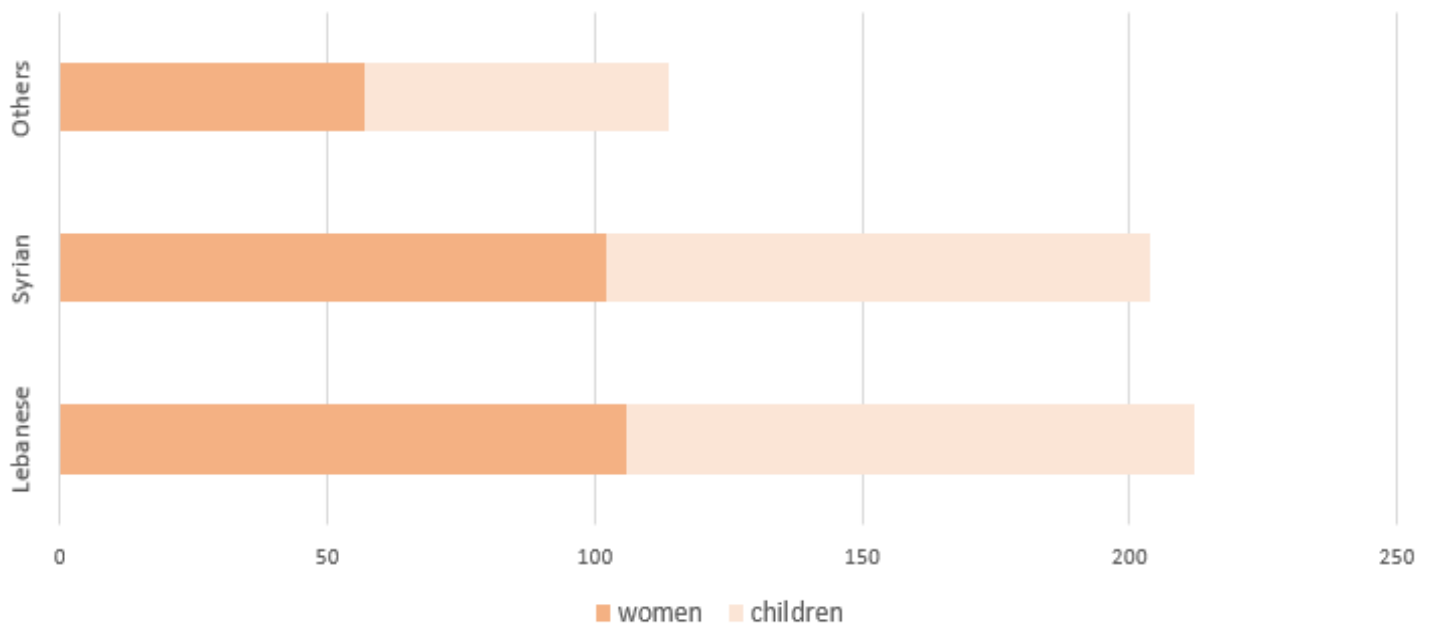


Figure 8: total number of direct beneficiaries reached under the Access to Justice program in 2021 distributed as per their nationality

LIVELIHOOD UNIT

What we do



MS is one of the non-secular NGOs to instigate Technical and Vocational Education and training (TVET) in Lebanon, espousing a social approach to the delivery of TVET since 1988 and aiming at improving youth and women chances of success and social integration.

MS proposed intervention under the livelihood unit meets the needs on the ground and reflects the priorities outlined in the national youth policy adopted by the Government of Lebanon (GoL) and aligns with the latter's vision to develop sustainable livelihood activities for people affected by the current crisis to reduce the dependence of vulnerable populations on

cash assistance and, at the same time, increase the productivity and income of local communities.

Guided by several assessments, MS team was able to identify many positive tendencies that are to be built upon in any further interventions. Some of those include:

- Improvement of organizations' cooperation with relevant ministries and local authorities,
- Improvement of coordination among partners, tendency to select innovative and productive market sectors due to previous observations such as ILO studies.

Said differently, MS efforts to align its skills development activities with market needs, and a noted orientation of some livelihood programs towards more village clustering which aims for a better impact and more comprehensive approaches. Within this framework, the focus was on high-demand jobs or most needed skills in the areas where the interventions took place taking into consideration available businesses and jobs in the communities, skills needed in those businesses aligning the training with the market need such as services, health, agriculture, and maintenance sector.



Beneficiaries and locations

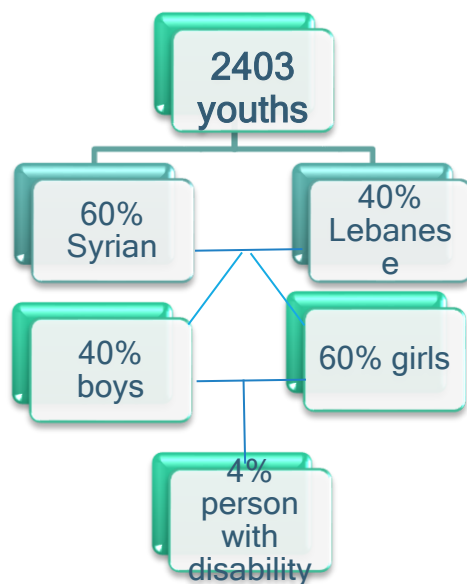
This proposed intervention is building up on the approach, methodology and outputs of the “Supporting vulnerable girls and boys with learning, soft and hard skills, and employability programmes in Lebanon”.

MS current interventions under this unit are introducing “The Pathway of Change” approach that focuses on supporting vulnerable Lebanese and non-Lebanese youth (girls and boys aged 14-25) through two mutually supporting pillars,

1. increased access of youth to technical and vocational training and innovative skills-building programmes for improved professional readiness and employability.
2. youth active participation and empowerment.

All of which will result in youth acquiring professional skills enabling them to have a first professional experience through in-class courses (theoretical and practical); youth benefiting from youth employment support services including internship; youth benefiting from employment or income generation opportunities (Cash for work); and them being trained on the Life Skills programmes packages HPM (Social Cohesion, positive employability, and Career Guidance), creating an environment where they feel respected and supported to be autonomous and reach their ambitions.

In 2021, and despite the economic collapse that the country has witnessed in the last years, Mouvement Social provided support to 2,403 youths.



As the main outcome of this unit is to increase the employability rates among youths, only 30% of the targeted population, during the year 2021, had access to permanent 6-12 months job opportunities due to the outbreak of Covid-19 and the economic crisis.

Activities under the livelihood unit were implemented in seven governorates in different localities across the Lebanese territory through MS 9 community centers (figure 9) which entails L'Oasis d'Esperance, registered vocational training school, has a special derogation from the Ministry of Education and Higher education- MEHE to deliver certified diplomas. Last but not least, MS worked closely with the Social Development Centers- SDCs under the patronage of the Ministry of Social Affairs in the 5 areas where Mouvement Social does not have a venter (figure 9).



Figure 9: MS centers and SDCs localities

EDUCATION UNIT

What we do

Under the Education Unit, Mouvement Social aims to create equitable access to educational opportunities for the most vulnerable children aging between 3 and 18 years old to benefit from inclusive and high-quality education. MS has used its expertise of more than 30 years, to contribute, directly and indirectly, to the “improving retention and achievement program” defined by the transitional framework which prepares students in non-formal education to enroll and remain informal ones; in addition to the priority area entitled “education that contributes to social integration”.

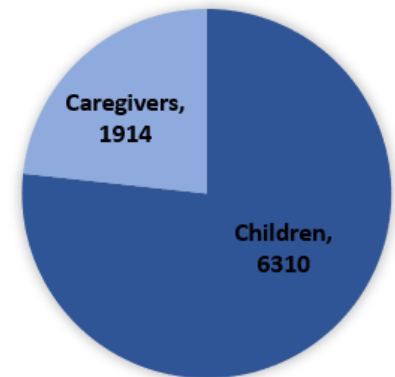


Figure 10: total number of direct beneficiaries reached under the Education

Beneficiaries and locations

In 2021, Mouvement social's Education services benefited 6,310 children and 1,914 caregivers, totaling to 8224 individuals. MS adopted an integrated approach reaching both the children enrolled in both formal and informal education, and their caregivers to create a supportive environment.

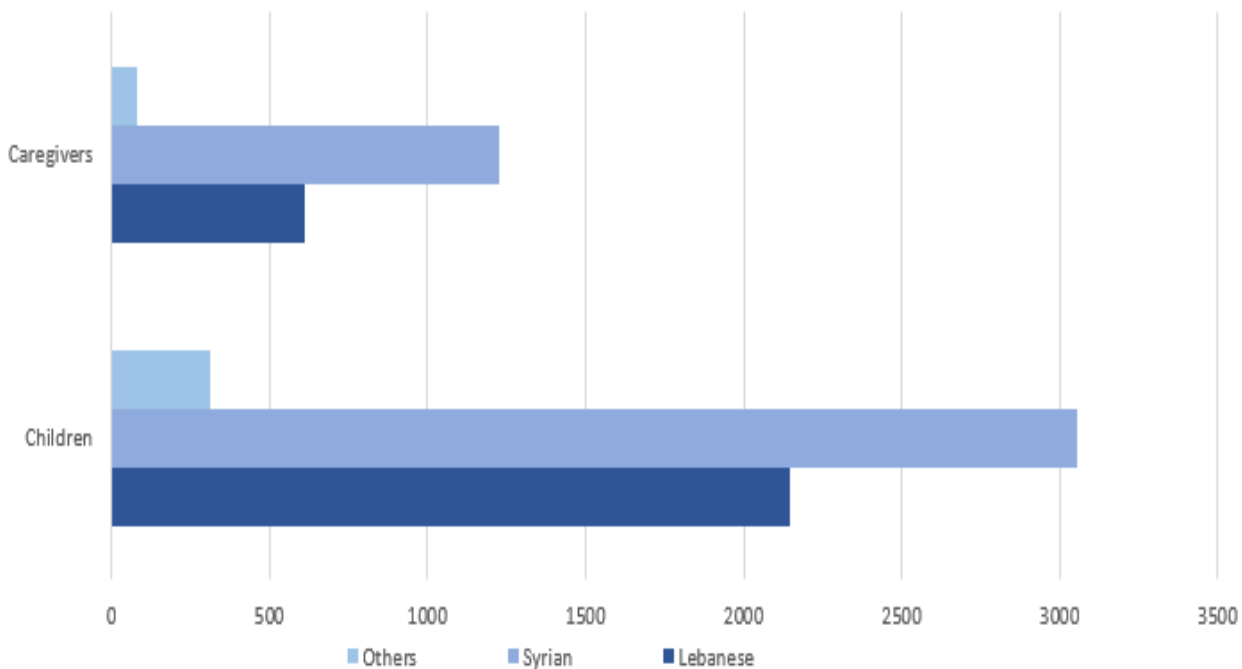


Figure10: total number of direct beneficiaries reached under the Education sector in 2021 distributed as per nationality



Implementing the “Reaching all Children with Education (RACE)” initiative

Under the umbrella of the RACE program implemented by the Ministry of Education and Higher Education (MEHE), Mouvement Social based its approach on adaptive methods to help children progress fast at both academic and behavioral level. MS conducted non-formal education activities, developed and implemented components in alphabetization and alternative education for [out-of-school](#) children including retention in school program.

When targeting vulnerable children and youth [in-school](#), MS adopted a preventive approach, by providing them with the needed support to remain in academic system. The MS team works with and for the holistic development of each child and youth by providing direct support to children and youth and their parents as well as partnering with educators in the schools that the children and youth attend. MS based its work on the “real time” needs of children and youth, helping them to overcome the challenges they face.

Mouvement Social launched Five Education projects in 2021 as follow:

Funded by UNICEF	• “Supporting vulnerable girls and boys to access and remain in education in Lebanon”
Funded by Partage	• “Around the school: Education”
Funded by Partage	• “leisureLift Obstacles IN Kids’ future - LINK”
Funded by Save The Children	• “Ensuring Education and Protection for Syrian Refugee Children”
Funded by Save The Children	• “Connecting to learn: Increasing access to learning and support Syrian refugee and vulnerable Lebanese children impacted by COVID-19”

Jnah Kindergarten- A story of education, care and compassion

In 1982, following the outbreak of the civil war, several families fled to the Jnah after their homes were destroyed and they lost everything they owned. To respond to these emerging needs, Mouvement Social began to provide them with clothing, food, medicine, hygiene kits...

At that time, Jnah did not have neither a mukhtar nor a municipality, and the neighborhood children did not have access to schools. To cater to this education gap, Bishop Gregoire Haddad rehabilitated a local school called Al-Kifah and registered the children in its classes and paid all the school fees. to the boys and began to search. To cater for the toddlers in Jnah that were not eligible for school classes yet, Mouvement Social bought a building and set it up for kindergarten classes and transitional courses for children who had educational needs and reached out through community channels to homeless street children inviting them to use the building as a safe shelter while providing at the same time enrollment courses for children in need.



The sustainability of the kindergarten was secured due to the fact that the children who finish the second level in kindergarten classes were ensured to enroll in Al Yanbu school and study there until the ninth grade. They could still enjoy afternoon classes in the kindergarten as a way for school support. From 1989 until 1993, the kindergarten had activities such as: Empowering lectures for women; school enrollment courses; Kindergarten trips; summer camps...And in 2008, the kindergarten program grew wider as classes for painting and sports activities were added.





As for the year 2021 Jnah kindergarten was among Mouvement Social's center to host not only the [LINK1](#) project that covered all ages, including children and parents, but also the [SHABAKE2](#) project for volunteers.

10 dedicated MS volunteers provide the needed technical support to ensure the well going of the Kindergarten activities. MS added a very important component for youth which is the "Career Guidance" program that aims to provide adolescents with tools to choose their future profession. MS even hired a speech therapist and a psychologist, and started a literacy class for the families enabling them to learn and help their children in the future. MS also recruited a teacher to help the children draft stories based on the reality of their lives.

Life Testimonial from Rabha Al Abdullah on Jnah Kindergarten

"I live in Jnah and I have four children. I had enrolled my eldest daughter in Jnah Kindergarten to attend the first and second level of schooling and we didn't have access to a school afterwards for her to complete her studies. With my second son, we didn't face this dilemma because as soon as he graduated from Kindergarten, he enrolled in Al-Yanbu school to continue his education. With the development of the Kindergarten along the years, we had more choices for educational and recreational activities not only for children but also for parents. The children feel psychologically comfortable with all the care provided by the MS team of staff and volunteers. We owe the education and upbringing of our children to the services provided by Jnah Kindergarten, because without it, our children would be illiterate and in the streets. Kindergarten is a safe place for us, where we can study and express freely our thoughts".

¹ LINK is an educational project that is mentioned in the section above.

² SHABAKE is a project for the volunteers at MS and is also covered in this report under the Volunteerism section

EMERGENCY RESPONSE

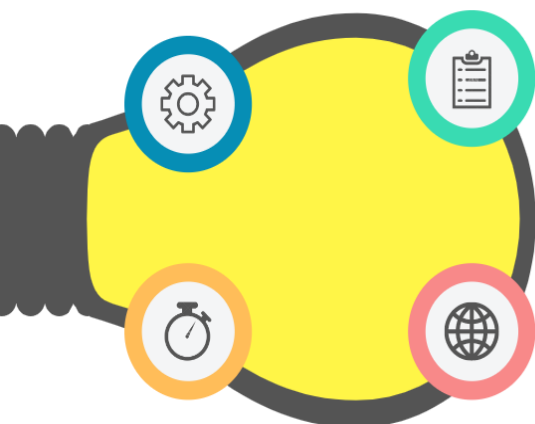
The situation in Lebanon deteriorated further in 2021. More than 80 percent of the country's residents did not have access to basic rights, including health, education, and an adequate standard of living, such as adequate housing and electricity, according to the United Nations.

The Lebanese pound has lost 90 percent of its value since October 2019, eroding people's ability to access basic goods, including food, water, health care, and education. Fuel shortages have caused widespread electricity blackouts, lasting up to 23 hours per day, and private generators—a costly alternative—have not been able to fill the gap, leaving large portions of the country in darkness for several hours per day. Hospitals, schools, and bakeries have struggled to operate amid these energy shortages.

The Lebanese government removed or decreased subsidies on fuel, wheat, medicine, and other basic goods, but it has failed to implement an adequate social protection scheme to shield vulnerable residents from the impact of steep price rises. Marginalized communities, including refugees, people with disabilities, migrant workers, and LGBTQ people, have been disproportionately impacted.

What we did

To contribute to alleviating the negative impact of the multiple crises on the population in need, Mouvement Social went out of its way to implement rapid response projects to support the population in need to overcome their everyday challenges. In total, 2676 direct beneficiaries benefited from this response and the provided services were as follow:



Cash for Work

1209 beneficiaries, 608 males and 601 females were provided Cash for Work in Sin El Fil, Bourj Hamoud, Nabatiyeh, Menjiz, Chakdouf, Ghobeiry, Tekrit, Bikfaya, Saida, Akkar, Zahle, Bayno and Tripoli

Conditional Cash Assistance

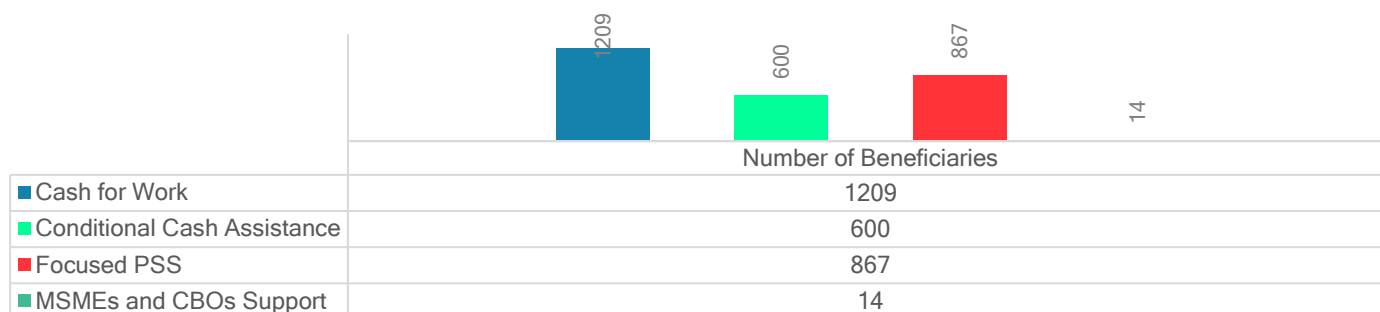
600 beneficiaries, 560 females and 40 males were provided Conditional Cash Assistance in Bourj Hammoud

Focused Psychosocial Support

867 beneficiaries were provided Focused Psycho-Social Support- FPSS in Sin El Fil- Bourj Hammoud- Jnah

MSMEs and CBOs Support

MS selected four MSMEs and 10 CBOs to support them with the necessary equipment and in-kind assistance as well as operations, indirect cost and utilities. The geographical coverage of this project tackled several vulnerable areas over the Lebanese territories such as Mount Lebanon (Bourj Hammoud, Bikfya, Ghobeyri and Sin el Fil), Akkar (Menjiz, Tekrit, Bayno and Chakdouf), North (Tripoli), South (Saida and Nabatieh) and Bekaa (Zahle).



Mouvement Social implemented the Emergency Response through three projects as follow: The “PSS-Response to Beirut Blast” funded by Partage, “Economic Empowerment to Vulnerable Communities in Lebanon” funded by UNDP, “Responding to the most immediate and lifesaving needs and time-critical early recovery needs arising from the Beirut Port explosions in Mount Lebanon governorate (Bourj Hammoud)” funded by Christian Aid